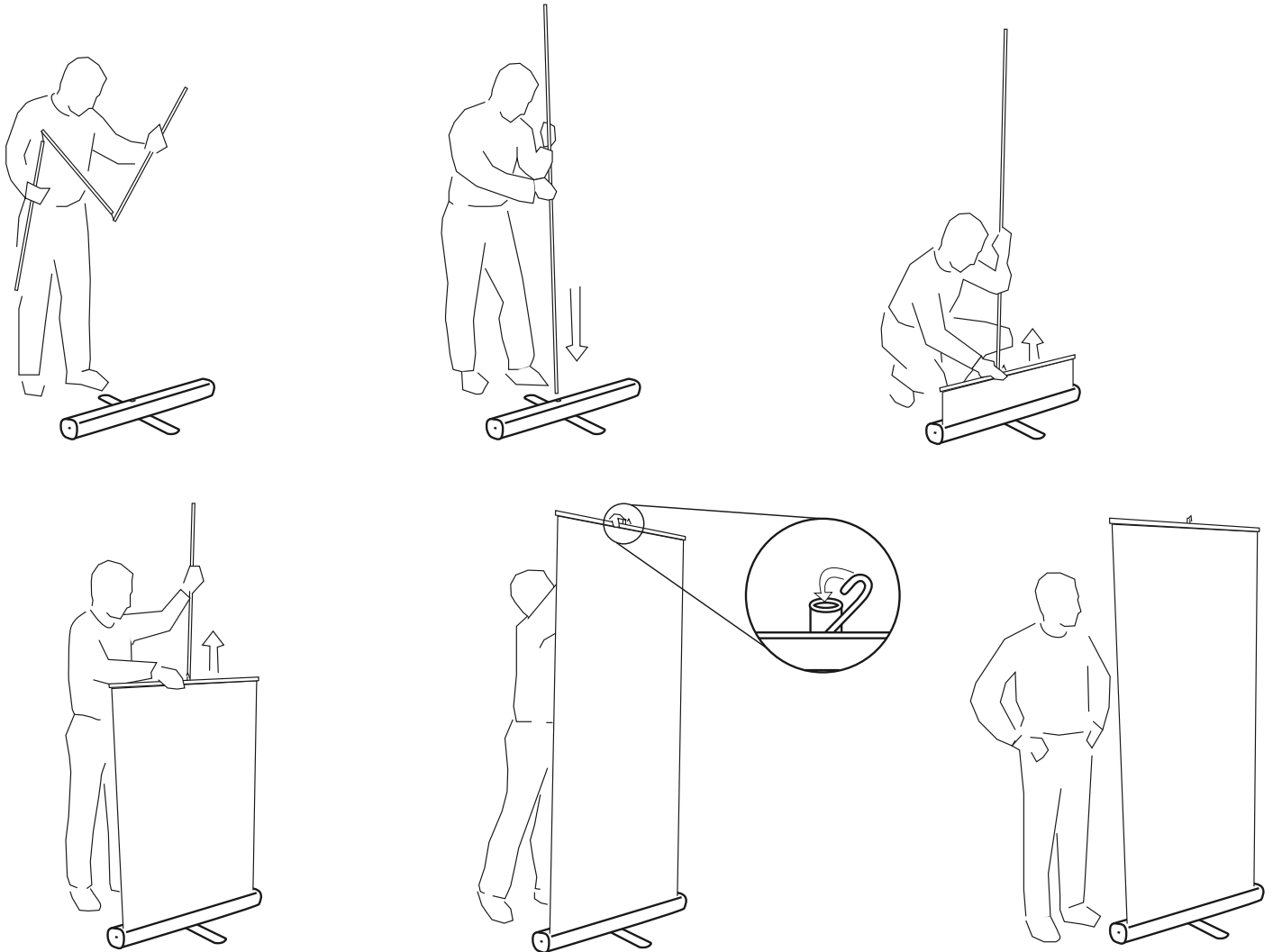


## **RETRACTABLE BANNER STAND SET-UP INSTRUCTIONS**



### **Set-up Instructions**

1. Assemble mast and insert into unit base
2. Extend retracted banner to full height of mast
3. Attach silver hook into top of mast
4. To break down repeat steps in reverse

**Do Not Drop Unit! Damage May Result!**

